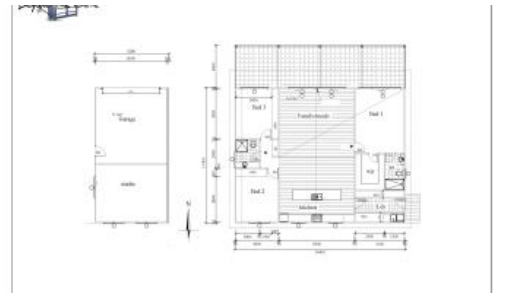
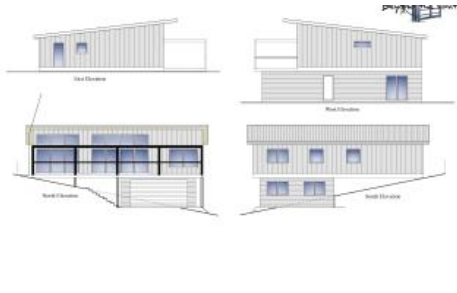


8 Bastin Street, Boolarra



Ready to build?

Are you ready to build? The hard work has been done with soil tests, surveying and plans drawn up. You just have to do the final stages of council approvals and the build.

Located just around the corner from the primary school and a short walk to the general store, rail trail and park it is an ideal location. Approximately 906m2 of prime titled land ready to go.

Make the choice to cut out costs and run with the existing plans or build your own dream home (STCA).

Contact Tanya at Strzelecki Realty for more information on 5633 2858.

The above information provided has been furnished to us by the vendor/s. We have not verified whether or not that information is accurate and do not have any belief in one way or the other in its accuracy. We do not accept any responsibility to any person for its accuracy and do no more than pass it on. All interested parties should make and rely upon their own inquiries in order to determine whether or not this information is in fact accurate.

📏 906 m2

Price	\$239,000
Property Type	Residential
Property ID	2192
Land Area	906 m2

Agent Details

Tanya Megaw - 0477 012 710

Office Details

Strzelecki Realty
03 5127 1333



Strzelecki Realty